

4-H & FFA CRAFTS

Crafts 4-H 308 and FFA 358

Superintendent: (we are in desperate need of a super in this department, please contact fair office if interested; 509-397-6263)

All entries in this Department shall be designed on fabric or designed of fabric.

DIV 1

Points: Blue 20, Red 15, White 12

Class:

Apron, Pin Cushion, Slippers, Belt, etc.

DIV 2

Points: Blue 20, Red 15, White 12

Class:

Quilt, Wallet, Kite, Bean Bag Chair, etc.

DIV 3

Points: Blue 35, Red 30, White 25

Class:

Quilt (quilted), Pieced, Appliqué, Embroidered Combination, Group quilts, Soft luggage, etc.

DIV 4 - Educational Displays

Points: Blue 25, Red 20, White 15

DIV 5 - Quilt Blocks

Points: Blue 20, Red 15, White 12

Design your own small quilt project such as a pillow, doll blanket or a wall hanging.

DIV 6 - Friendship Basket

Points: Blue 20, Red 15, White 12

Enter only one. Use your imagination and sewing interest.

There is no limit in division, except where stated, as long as different method used to make each article.

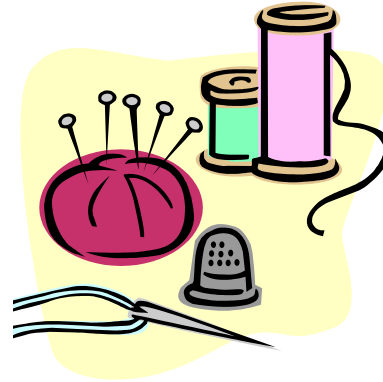
DIV 1 - Simple Knitting & Crocheting

Points: Blue 20, Red 15, White 12

Class:

Potholder
Dish cloth
Cutie Cap
Knitting bag or box
Head Band
Other

Knitted and Crocheted, Needlework, Latch Hook Articles and Weaving 4-H 309 and FFA 359



DIV 2 - Medium Knitting and Crocheting

Points: Blue 20, Red 15, White 12

Class:

Scarf (head or neck), Slippers, Cap or beret, Doll clothes, Socks or Mittens (2 needles), Purse, etc.

DIV 3 - Moderate Knitting and Crocheting

Points: Blue 20, Red 15, White 12

Class:

Vest, Socks or Mittens (4 needles), Sweater, etc.

DIV 4 - Advanced Knitting and Crocheting

Points: Blue 30, Red 25, White 20

Class:

Pullover Sweater (with design or pattern), poncho or shawl, Cardigan with sleeves, etc

DIV5 - Needlework

Simple: Blue 15, Red 12, White 10

Difficult: Blue 20, Red 15, White 12

Class:

Simple item
Difficult
(Limit of 3 different items in this division)

DIV 6 - Latch Hook

Simple: Blue 15, Red 12, White 10

Difficult: Blue 20, Red 15, White 12

Class:

Simple item
Difficult
(Limit of 3 different items in this division)

DIV 7 - Weaving

Simple: Blue 15, Red 12, White 10

4-H & FFA CRAFTS

Difficult: Blue 20, Red 15, White 12

Class:

Simple item

Difficult

(Limit of 3 different items in this division)

DIV 8 – Counted Cross Stitch

Simple: Blue 15, Red 12, White 10

Difficult: Blue 20, Red 15, White 12

Class:

Simple item

Difficult

(Limit of 3 different items in this division)



DIV 9 – Macramé

Simple: Blue 15, Red 12, White 10

Difficult: Blue 20, Red 15, White 12

Class:

Simple item

Sub-class:

Household items, Accessories, etc.

Difficult:

Sub-class:

Household items, Accessories, etc.

DIV 10 – Plastic Art

Simple: Blue 15, Red 12, White 10

Difficult: Blue 20, Red 15, White 12

Class:

Simple item

Sub-Class:

Household items, Accessory, etc.

Difficult:

Sub-class:

Household items, Accessory, etc.

DIV 11 – Educational Displays

Points: Blue 25, Red 20, White 15

Crafts 4-H 310 and FFA 360

Please read all rules on first page of this Department, as well as the following, they apply to all exhibitors in this Division.

Be sure to state whether entry is an original or made from a kit.

Please have all tags completed – top and bottom – write name of item on bottom.

Judges may award additional points based on difficulty at their discretion

DIV 1- Any Crafts

Points: Blue 15, Red 12, White 10

MULTIPLE ENTRIES ARE ACCEPTED IF ITEM AND OR MEDIA DIFFER

DIV 2- Selected Crafts

Points: Blue 15, Red 12, White 10

MULTIPLE ENTRIES ARE ACCEPTED IF ITEM AND OR MEDIA DIFFER

Class:

Collage

Carving or Whittling

Sub-class:

Bone, Soap, Wood, Dolls or Clothes, Design of any media on display board (not over 15”), Diorama (not to exceed 15”), Ecology craft, Fly tying, Mobile, etc.

DIV 3 – Jewelry

Points: Blue 15, Red 12, White 10

Class:

Jewelry (may enter 6 different pieces. Use subclasses a, b, c, d, e, and f)

DIV 4 – Rockets

Points: Blue 15, Red 12, White 10

Judges may award additional points based on difficulty at their discretion

Class:

Balsa, Plastic, etc.

Subclass:

Skill level as indicated on rocket

DIV 5 – Pet Pals

Points: Blue 15, Red 12, White 10

Class:

Pet garments

Pet snack foods



4-H & FFA CRAFTS

Creature garments (beds, habitats, etc)
Etc.

DIV 6 – Creative Writing

Points: Blue 15, Red 12, White 10

All entries shall be in booklet form or matted for display appeal. Entries will be judged on both writing and presentation.

Class:

Calligraphy, Computer art Poetry, etc.

DIV 7 – Wood

Points: Blue 15, Red 12, White 10

Class:

Planters, Games, Toys, Bird house, etc.

DIV 8 – Gift Basket

Points: Blue 15, Red 12, White 10

Class:

Soap/perfume/bath beads, etc.

DIV 9 – Educational Displays

Points: Blue 25, Red 20, White 15

These entries shall be crafts.



DIV 10- “We Can Build It”

Class 1- Kit

Subclass:

LEGOS, K’NEX, BIONICLES, etc.

(Picture and/or kit instructions should be included)

Class 2- Original

Subclass:

LEGOS, K’NEX, BIONICALS, etc.

(Made without pattern or picture)

M&M Harrison Electric Award

“Our Youth will Build Our Future”

1st, 2nd, and 3rd- Lego Prize

Ceramics **4-H 311 and FFA 361**

Judges may award additional points based on difficulty at their discretion

DIV 1

Points: Blue 15, Red 12, White 10

Class:

Glaze

Sub-classes:

Gloss, Matt, Texture, Satin, Crackle, etc.

Sub-classes:

Luster, Silver, Gold, under glaze, etc.

Sub-classes:

Design, Glaze, Graffito, Stains, etc.

Sub-classes:

Flat, Antique, Pearl, Chalk, Air-brush, etc.

DIV 2

Points: Blue 15, Red 12, White 10

Class:

Hand formed

Sub-classes:

Coil, Pinch, Slap, Combination, etc.

DIV 3 – EDUCATIONAL DISPLAYS

Points: Blue 25, Red 20, White 15

These entries shall be ceramic



4H & FFA CRAFTS

Fine Arts 4-H 312 and FFA 362

Please indicate on exhibit tag whether exhibit is an original or copy. All entries should be framed, mounted or matted with a hanger attached. Pin tags on front.

MULTIPLE ENTRIES ACCEPTED AS LONG AS SUBJECT MATTER AND OR MEDIA DIFFER

Sub-Classes: (Media) for Divisions 1 and 2:
Acrylic, Charcoal, Chalk, Crayon, Oil, etc.

DIV 1

Points: Blue 15, Red 12, White 10
Judges may award additional points based on difficulty at their discretion

Class:
Still life, Portrait or figures, Flowers, Landscapes, etc.

DIV 2

Points: Blue 15, Red 12, White 10

Class:
Collective Grouping
NOTE: Each exhibitor can have one (1) entry in each subclass.
See 4H Projects and Publications (EM2778). A wall or table display should not exceed 24" x 36". Exhibit may not be entered in other divisions of fair when entered in this division.

Educational Displays 4-H 313 and FFA 363

DIV 1 - WALL DISPLAY

Points: Blue 25, Red 20, White 15

Class: Animal Science

Subclass:
Cats, Dogs, etc.

Expressive Art

Subclass:
Creative Arts, Performing Arts, etc.

Family Living

Subclass:
Clothing/Textiles/Needlework,
Food/Nutrition/Preservation

Child Care, etc.

Mechanical Science

Subclass:
Aerospace, Bicycle, Computers, etc.

Natural Resources

Subclass:
Natural Resources series, Shooting Sports, etc.

Plant Science

Subclass:
Plants, Gardening, Entomology, Weeds, etc.

Social Science

Subclass:
Citizenship, Health, 4H Promotion, etc.

DIV 2 - TABLE DISPLAY

Points: Blue 30, Red 23, White 17
(Same sub-classes as in Division 1)

DIV 3 - REPORTS

Points: Blue 30, Red 23, White 17

Class:
Club Activities, Community Service Project, County Events, Camp, etc.

Score Card:

- Educational value – 50 points
- Is there one main idea?
- Is information accurate?
- Is message brief and clear?
- Does the display convey the importance of the message?
- Is the display appropriate for the intended audience?
- Design – 30 points
- Does it attract the attention and hold viewer's interest?
- Does it have one center of interest, which each part supports?
- Is color used effectively?
- Is lettering easy to read?
- Originality, Creativity and Neatness – 20 points
- Does the display show imagination, creative thought and originality?
- Is the general appearance neat, simple, orderly?
- Display may show any topic of an educational nature.