

# 4-H & FFA CRAFTS

## Crafts 4-H 308 and FFA 358 Superintendent: Katie Cahill

All entries in this Department shall be designed on fabric or designed of fabric.

### DIV 1

Points: Blue 20, Red 15, White 12

*Class:*

Apron, Pin Cushion, Slippers, Belt, etc.

### DIV 2

Points: Blue 20, Red 15, White 12

*Class:*

Quilt, Wallet, Kite, Bean Bag Chair, etc.

### DIV 3

Points: Blue 35, Red 30, White 25

*Class:*

Quilt (quilted), Pieced, Appliqué, Embroidered Combination, Group quilts, Soft luggage, etc.

### DIV 4 – Educational Displays

Points: Blue 25, Red 20, White 15

### DIV 5 – Quilt Blocks

Points: Blue 20, Red 15, White 12

Design your own small quilt project such as a pillow, doll blanket or a wall hanging.

### DIV 6 – Friendship Basket

Points: Blue 20, Red 15, White 12

Enter only one. Use your imagination and sewing interest.

There is no limit in division, except where stated, as long as different method used to make each article.

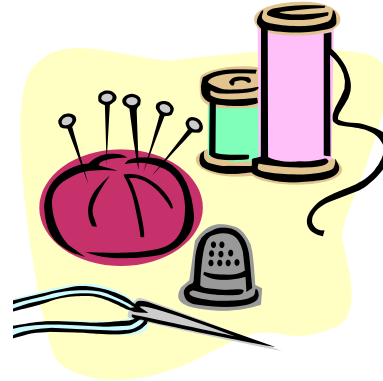
### DIV 1 – Simple Knitting & Crocheting

Points: Blue 20, Red 15, White 12

*Class:*

Potholder  
Dish cloth  
Cutie Cap  
Knitting bag or box  
Head Band  
Other

## Knitted and Crocheted, Needlework, Latch Hook Articles and Weaving 4-H 309 and FFA 359



### DIV 2 – Medium Knitting and Crocheting

Points: Blue 20, Red 15, White 12

*Class:*

Scarf (head or neck), Slippers, Cap or beret, Doll clothes, Socks or Mittens (2 needles), Purse, etc.

### DIV 3 – Moderate Knitting and Crocheting

Points: Blue 20, Red 15, White 12

*Class:*

Vest, Socks or Mittens (4 needles), Sweater, etc.

### DIV 4 – Advanced Knitting and Crocheting

Points: Blue 30, Red 25, White 20

*Class:*

Pullover Sweater (with design or pattern), poncho or shawl, Cardigan with sleeves, etc

### DIV 5 – Needlework

Simple: Blue 15, Red 12, White 10

Difficult: Blue 20, Red 15, White 12

*Class:*

Simple item  
Difficult  
(Limit of 3 different items in this division)

### DIV 6 – Latch Hook

Simple: Blue 15, Red 12, White 10

Difficult: Blue 20, Red 15, White 12

*Class:*

Simple item  
Difficult  
(Limit of 3 different items in this division)

### DIV 7 – Weaving

Simple: Blue 15, Red 12, White 10

# 4-H & FFA CRAFTS

Difficult: Blue 20, Red 15, White 12

**Class:**

Simple item  
Difficult  
(Limit of 3 different items in this division)

## DIV 8 – Counted Cross Stitch

Simple: Blue 15, Red 12, White 10  
Difficult: Blue 20, Red 15, White 12

**Class:**

Simple item  
Difficult  
(Limit of 3 different items in this division)



## DIV 9 – Macramé

Simple: Blue 15, Red 12, White 10  
Difficult: Blue 20, Red 15, White 12

**Class:**

Simple item  
Sub-class:  
Household items, Accessories, etc.  
Difficult:  
Sub-class:  
Household items, Accessories, etc.

## DIV 10 – Plastic Art

Simple: Blue 15, Red 12, White 10  
Difficult: Blue 20, Red 15, White 12

**Class:**

Simple item  
Sub-Class:  
Household items, Accessory, etc.  
Difficult:  
Sub-class:  
Household items, Accessory, etc.

## DIV 11 – Educational Displays

Points: Blue 25, Red 20, White 15

### Crafts 4-H 310 and FFA 360

Please read all rules on first page of this Department, as well as the following, they apply to all exhibitors in this Division.

Be sure to state whether entry is an original or made from a kit.

Please have all tags completed – top and bottom – write name of item on bottom.

Judges may award additional points based on difficulty at their discretion

## DIV 1- Any Crafts

Points: Blue 15, Red 12, White 10

MULTIPLE ENTRIES ARE ACCEPTED IF ITEM AND OR MEDIA DIFFER

## DIV 2- Selected Crafts

Points: Blue 15, Red 12, White 10

MULTIPLE ENTRIES ARE ACCEPTED IF ITEM AND OR MEDIA DIFFER

**Class:**

Collage  
Carving or Whittling

**Sub-class:**

Bone, Soap, Wood, Dolls or Clothes,  
Design of any media on display board (not over 15”), Diorama (not to exceed 15”),  
Ecology craft, Fly tying, Mobile, etc.

## DIV 3 – Jewelry

Points: Blue 15, Red 12, White 10

**Class:**

Jewelry (may enter 6 different pieces. Use subclasses a, b, c, d, e, and f)

## DIV 4 – Rockets

Points: Blue 15, Red 12, White 10

Judges may award additional points based on difficulty at their discretion

**Class:**

Balsa, Plastic, etc.

**Subclass:**

Skill level as indicated on rocket

## DIV 5 – Pet Pals

Points: Blue 15, Red 12, White 10



Etc.

**Class:**

Pet garments  
Pet snack foods  
Creature garments  
(beds, habitats, etc)

# 4-H & FFA CRAFTS

## DIV 6 – Creative Writing

Points: Blue 15, Red 12, White 10

All entries shall be in booklet form or matted for display appeal. Entries will be judged on both writing and presentation.

*Class:*

Calligraphy, Computer art Poetry, etc.

## DIV 7 – Wood

Points: Blue 15, Red 12, White 10

*Class:*

Planters, Games, Toys, Bird house, etc.

## DIV 8 – Gift Basket

Points: Blue 15, Red 12, White 10

*Class:*

Soap/perfume/bath beads, etc.

## DIV 9 – Educational Displays

Points: Blue 25, Red 20, White 15

These entries shall be crafts.



## DIV 10- “We Can Build It”

*Class 1- Kit*

*Subclass:*

LEGOS, K’NEX, BIONICLES, etc.

(Picture and/or kit instructions should be included)

*Class 2- Original*

*Subclass:*

LEGOS, K’NEX, BIONICALS, etc.

(Made without pattern or picture)

## M&M Harrison Electric Award

“Our Youth will Build Our Future”

1<sup>st</sup>, 2<sup>nd</sup>, and 3<sup>rd</sup>- Lego Prize

## Ceramics 4-H 311 and FFA 361

Judges may award additional points based on difficulty at their discretion

### DIV 1

Points: Blue 15, Red 12, White 10

*Class:*

Glaze

*Sub-classes:*

Gloss, Matt, Texture, Satin, Crackle, etc.

*Sub-classes:*

Luster, Silver, Gold, under glaze, etc.

*Sub-classes:*

Design, Glaze, Graffito, Stains, etc.

*Sub-classes:*

Flat, Antique, Pearl, Chalk, Air-brush, etc.

### DIV 2

Points: Blue 15, Red 12, White 10

*Class:*

Hand formed

*Sub-classes:*

Coil, Pinch, Slap, Combination, etc.

### DIV 3 – EDUCATIONAL DISPLAYS

Points: Blue 25, Red 20, White 15

These entries shall be ceramic



# 4H & FFA CRAFTS

## Fine Arts 4-H 312 and FFA 362

Please indicate on exhibit tag whether exhibit is an original or copy. All entries should be framed, mounted or matted with a hanger attached. Pin tags on front.

MULTIPLE ENTRIES ACCEPTED AS LONG AS SUBJECT MATTER AND OR MEDIA DIFFER

*Sub-Classes:* (Media) for Divisions 1 and 2:  
Acrylic, Charcoal, Chalk, Crayon, Oil, etc.

### DIV 1

Points: Blue 15, Red 12, White 10  
Judges may award additional points based on difficulty at their discretion

*Class:*  
Still life, Portrait or figures, Flowers, Landscapes, etc.

### DIV 2

Points: Blue 15, Red 12, White 10

*Class:*  
Collective Grouping  
NOTE: Each exhibitor can have one (1) entry in each subclass.  
See 4H Projects and Publications (EM2778). A wall or table display should not exceed 24" x 36". Exhibit may not be entered in other divisions of fair when entered in this division.

## Educational Displays 4-H 313 and FFA 363

### DIV 1 - WALL DISPLAY

Points: Blue 25, Red 20, White 15

*Class:* Animal Science

*Subclass:*  
Cats, Dogs, etc.

Expressive Art

*Subclass:*  
Creative Arts, Performing Arts, etc.

Family Living

*Subclass:*  
Clothing/Textiles/Needlework,  
Food/Nutrition/Preservation

Child Care, etc.  
Mechanical Science

*Subclass:*  
Aerospace, Bicycle, Computers, etc.

Natural Resources

*Subclass:*  
Natural Resources series, Shooting Sports, etc.

Plant Science

*Subclass:*  
Plants, Gardening, Entomology, Weeds, etc.

Social Science

*Subclass:*  
Citizenship, Health, 4H Promotion, etc.

### DIV 2 - TABLE DISPLAY

Points: Blue 30, Red 23, White 17  
(Same sub-classes as in Division 1)

### DIV 3 - REPORTS

Points: Blue 30, Red 23, White 17

*Class:*  
Club Activities, Community Service Project, County Events, Camp, etc.

### Score Card:

- Educational value – 50 points
- Is there one main idea?
- Is information accurate?
- Is message brief and clear?
- Does the display convey the importance of the message?
- Is the display appropriate for the intended audience?
- Design – 30 points
- Does it attract the attention and hold viewer's interest?
- Does it have one center of interest, which each part supports?
- Is color used effectively?
- Is lettering easy to read?
- Originality, Creativity and Neatness – 20 points
- Does the display show imagination, creative thought and originality?
- Is the general appearance neat, simple, orderly?
- Display may show any topic of an educational nature.